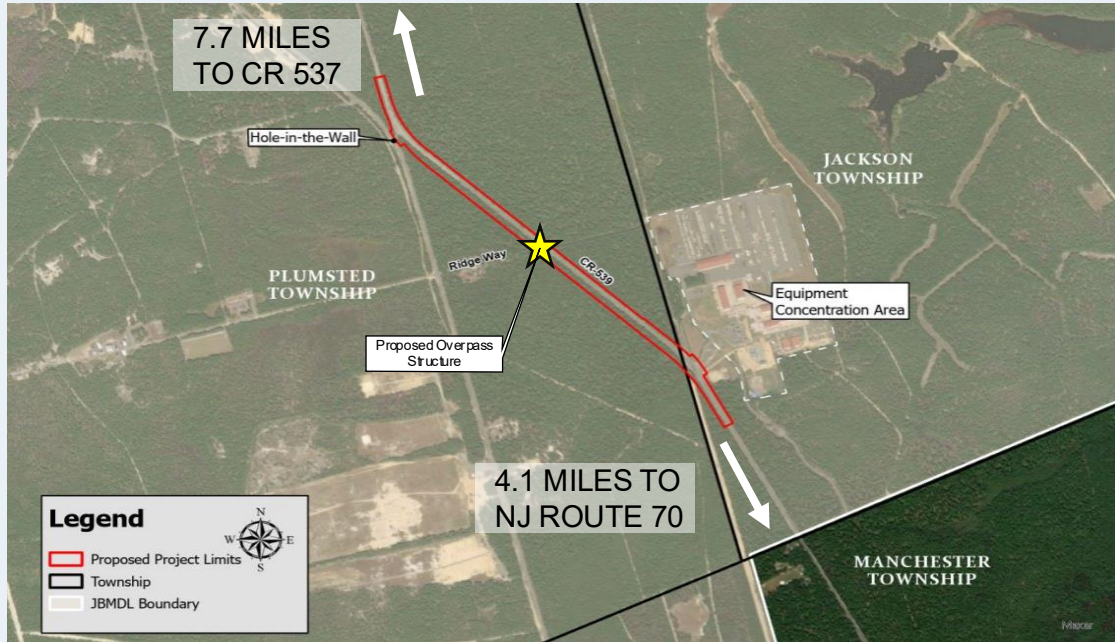


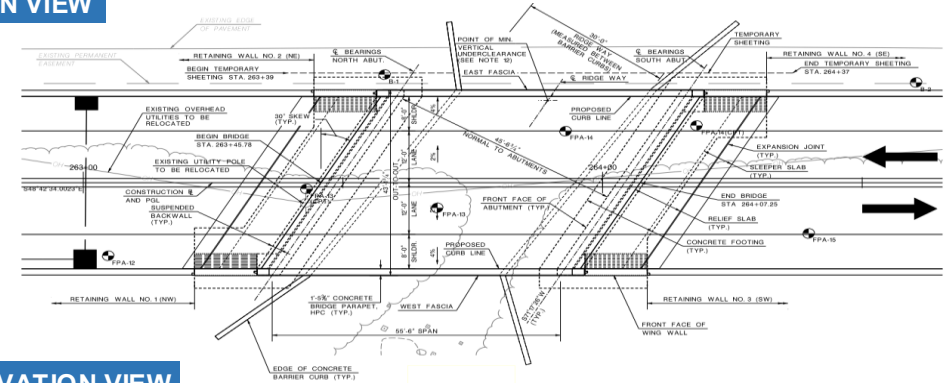


# Final Design Public Information Center – General Overview

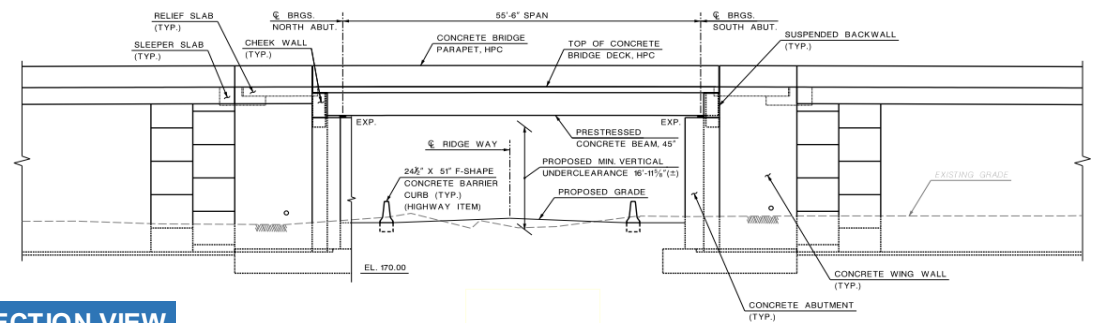


## PROPOSED OVERPASS STRUCTURE

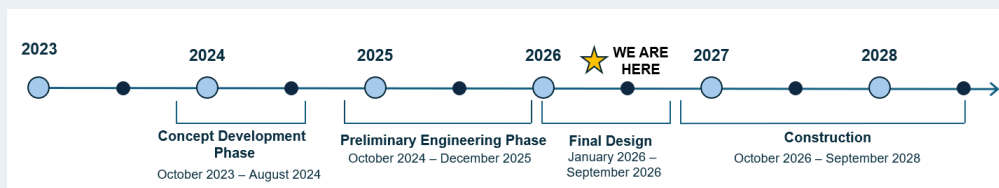
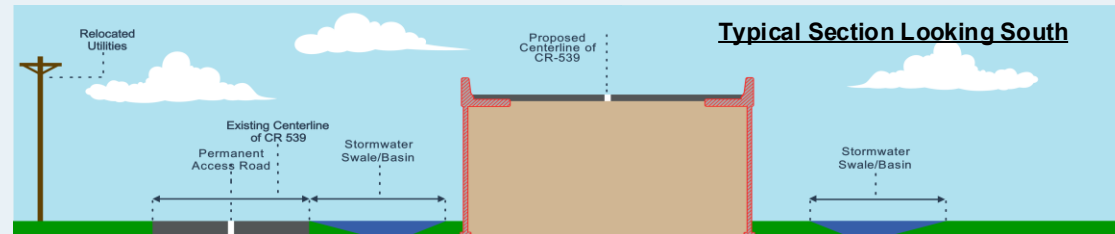
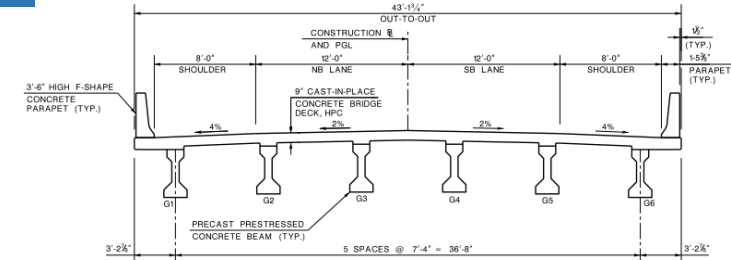
PLAN VIEW



ELEVATION VIEW



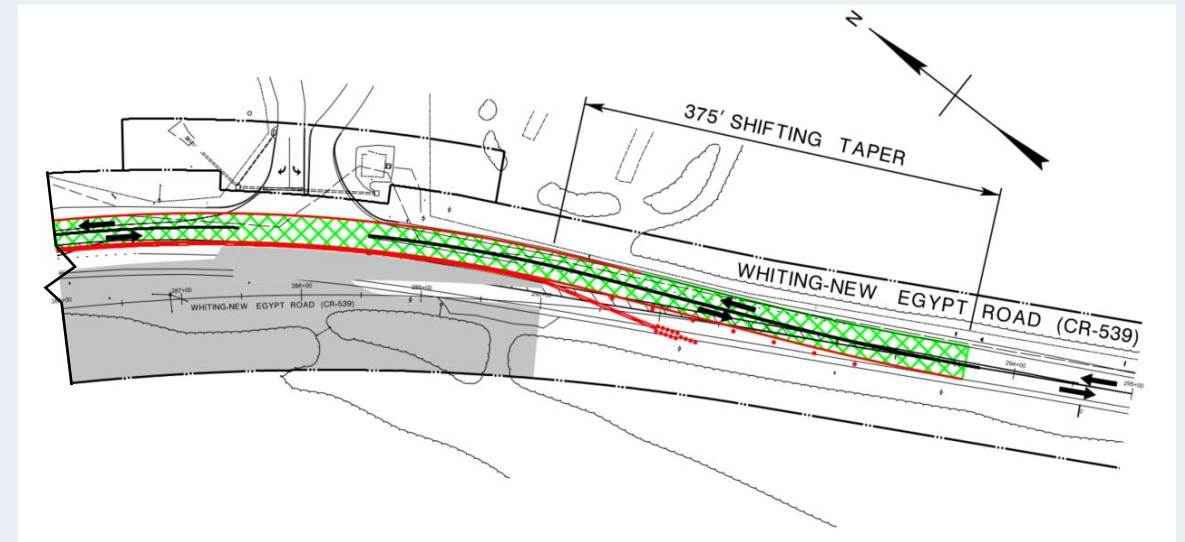
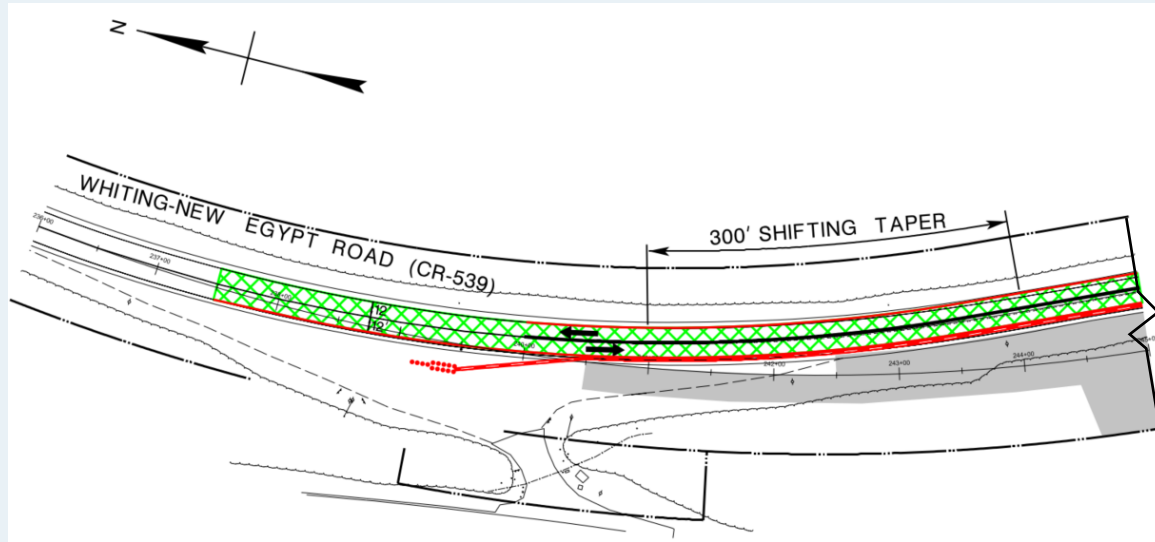
SECTION VIEW



CR539atJBMDL.com




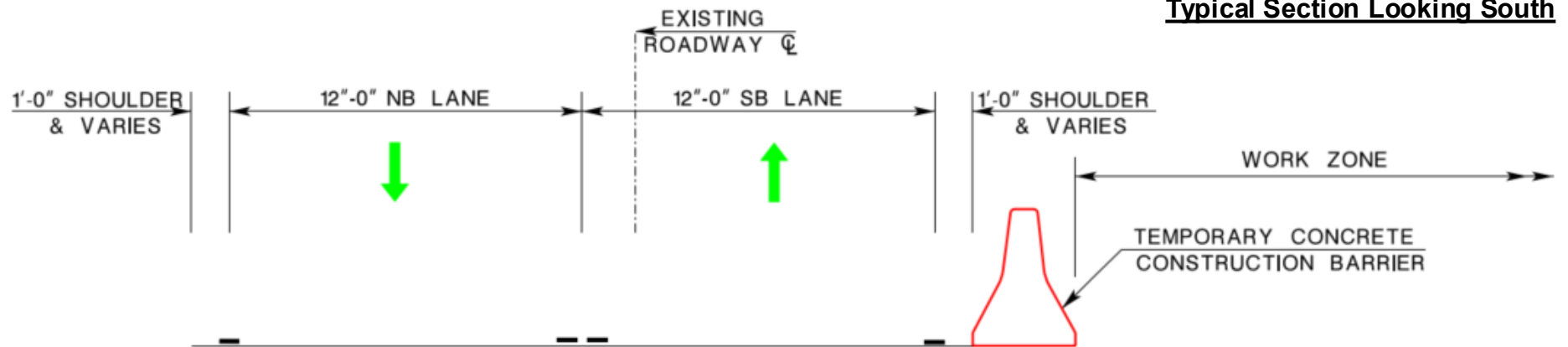
# Final Design Public Information Center – Construction Stage 1



## Legend

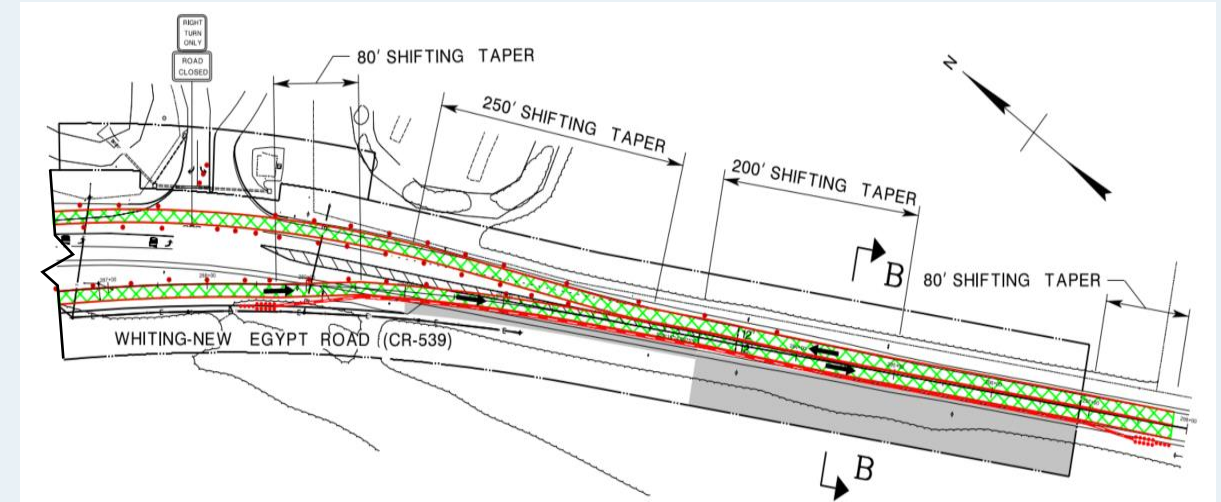
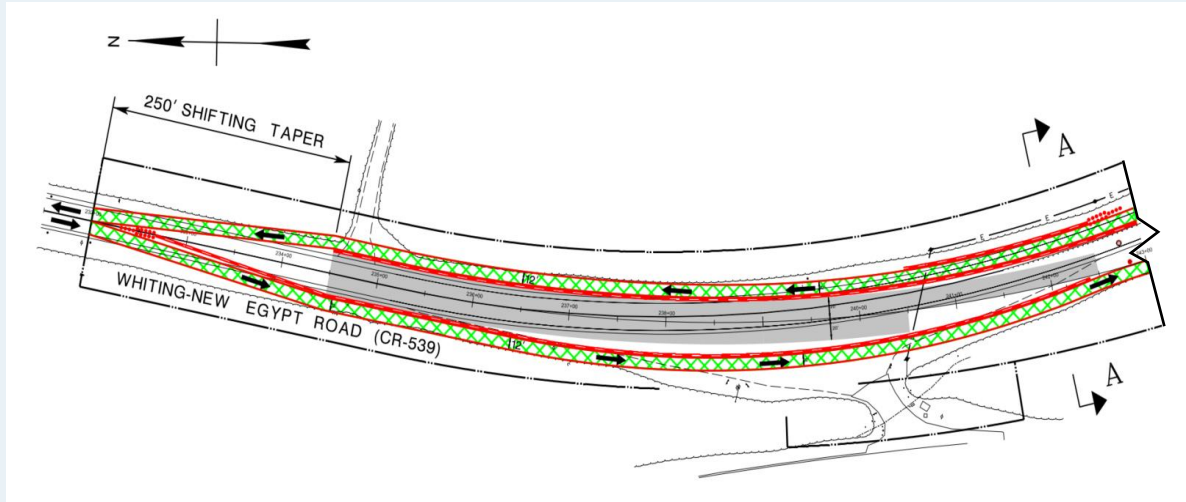
 Temporary Lane Locations

 Proposed Traffic Control Devices






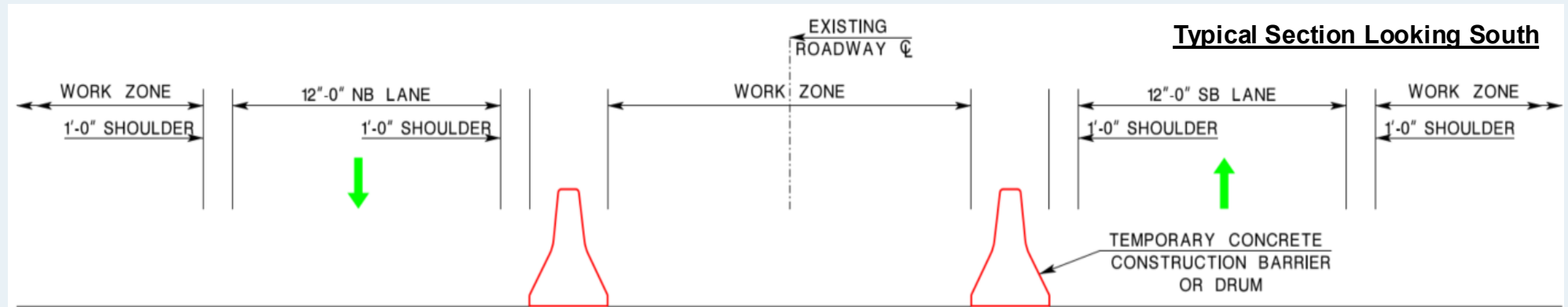
# Final Design Public Information Center – Construction Stage 2



## Legend

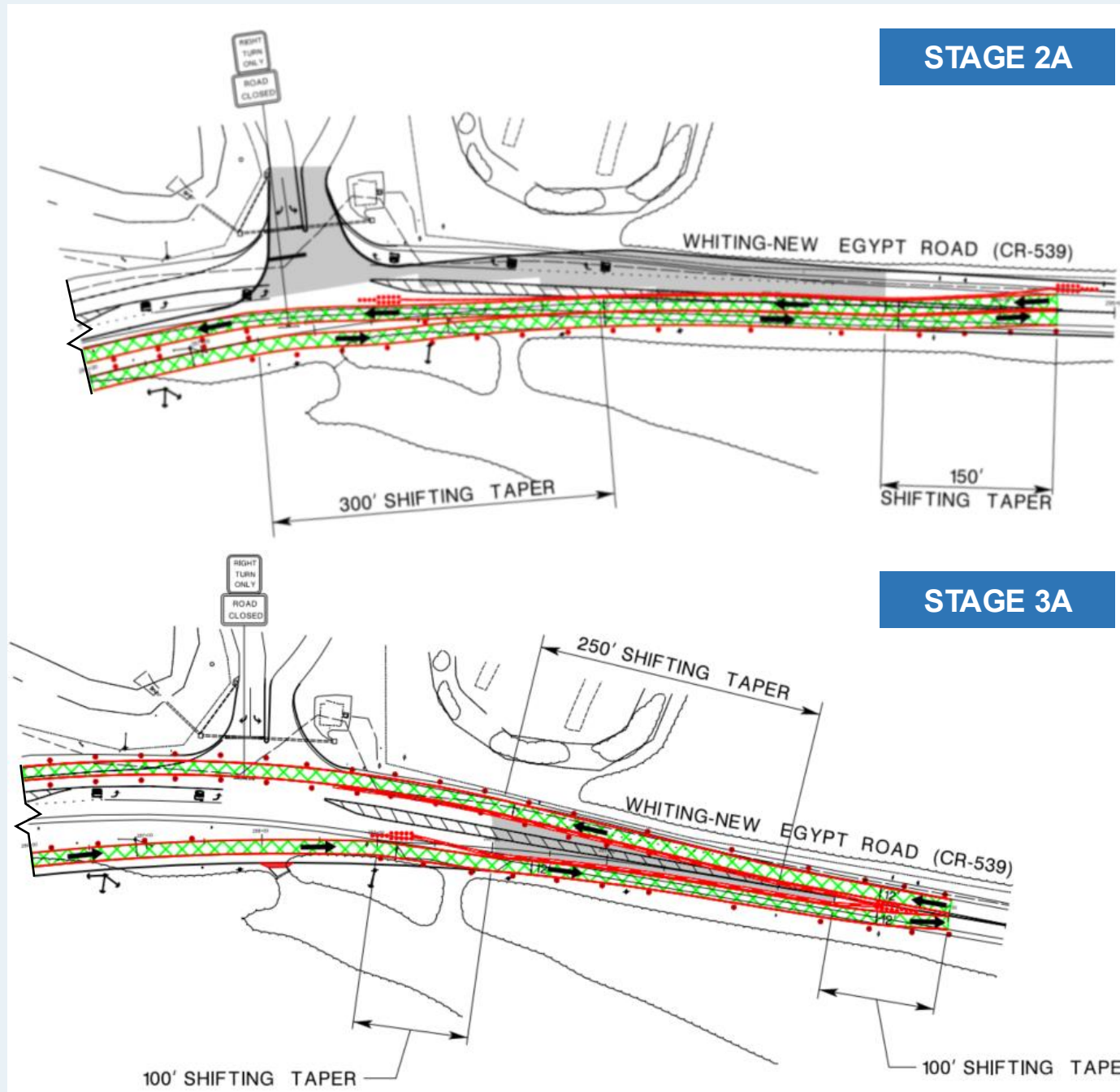
 Temporary Lane Locations

 Proposed Traffic Control Devices



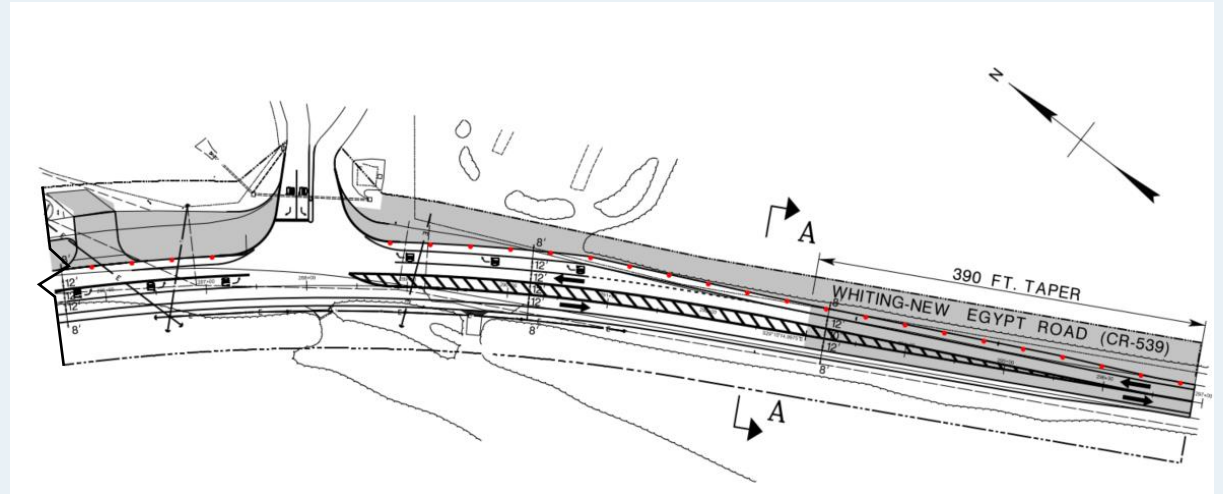
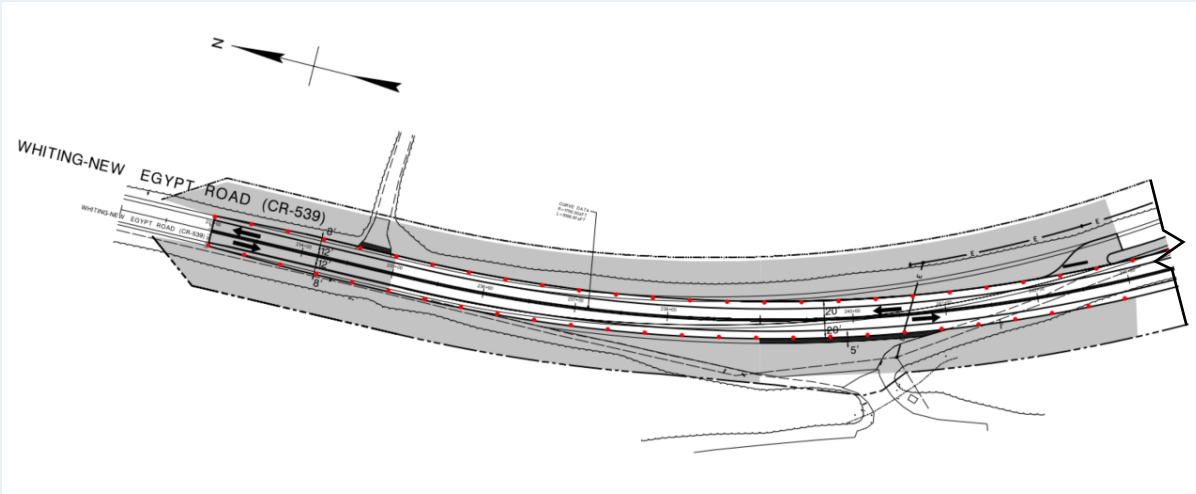
COUNTY ROUTE  
(CR) 539, STR.  
NO. 1523-031,  
WHITING-NEW  
EGYPT ROAD  
OVER RIDGE  
WAY

Final Design  
Public  
Information  
Center –  
Construction  
Stage 2A and  
3A




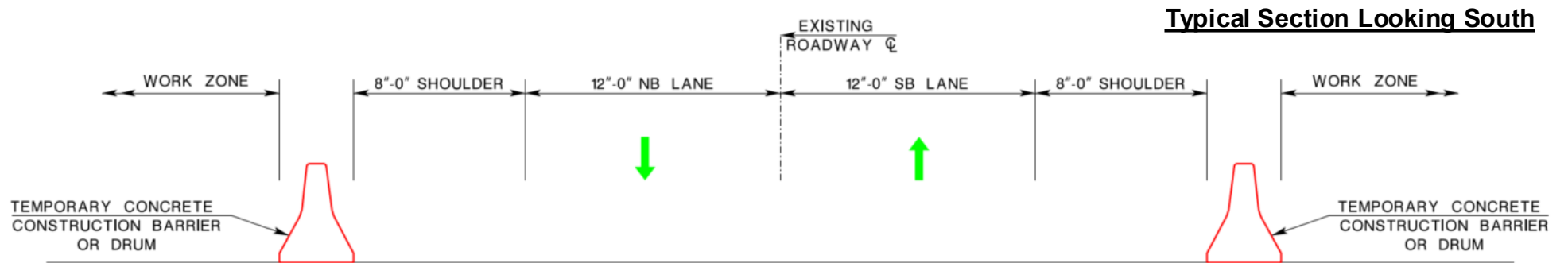


# Final Design Public Information Center – Construction Stage 3



## Legend

-  Proposed Traffic Control Devices



STAGE 3 TYPICAL SECTION  
(NTS - LOOKING SOUTH)